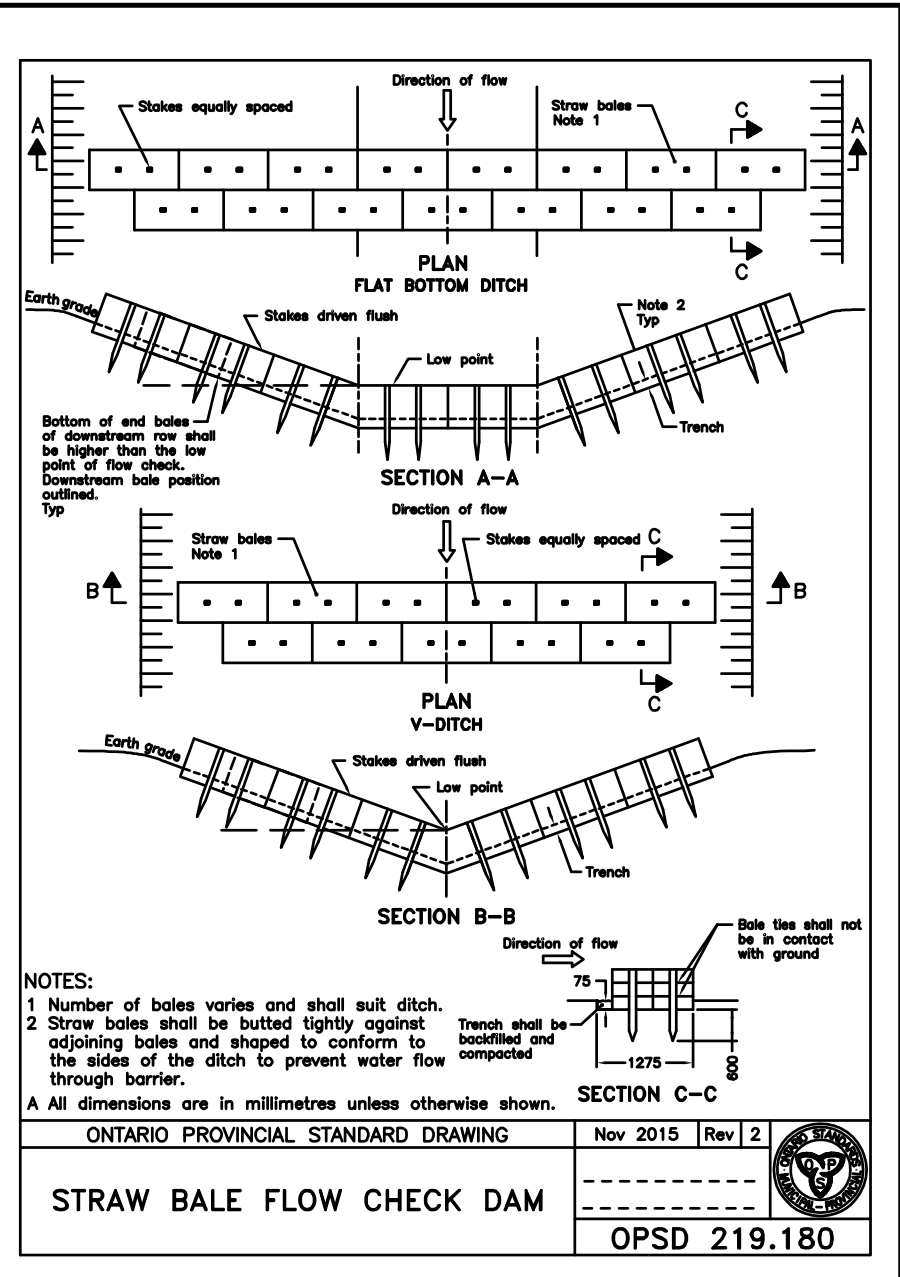


SECTION A-A
 NOTE:
 A All dimensions are in millimetres unless otherwise shown.

ONTARIO PROVINCIAL STANDARD DRAWING Nov 2015 Rev 2
LIGHT-DUTY SILTY FENCE BARRIER
 OPSD 219.110

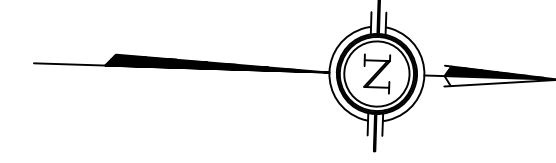
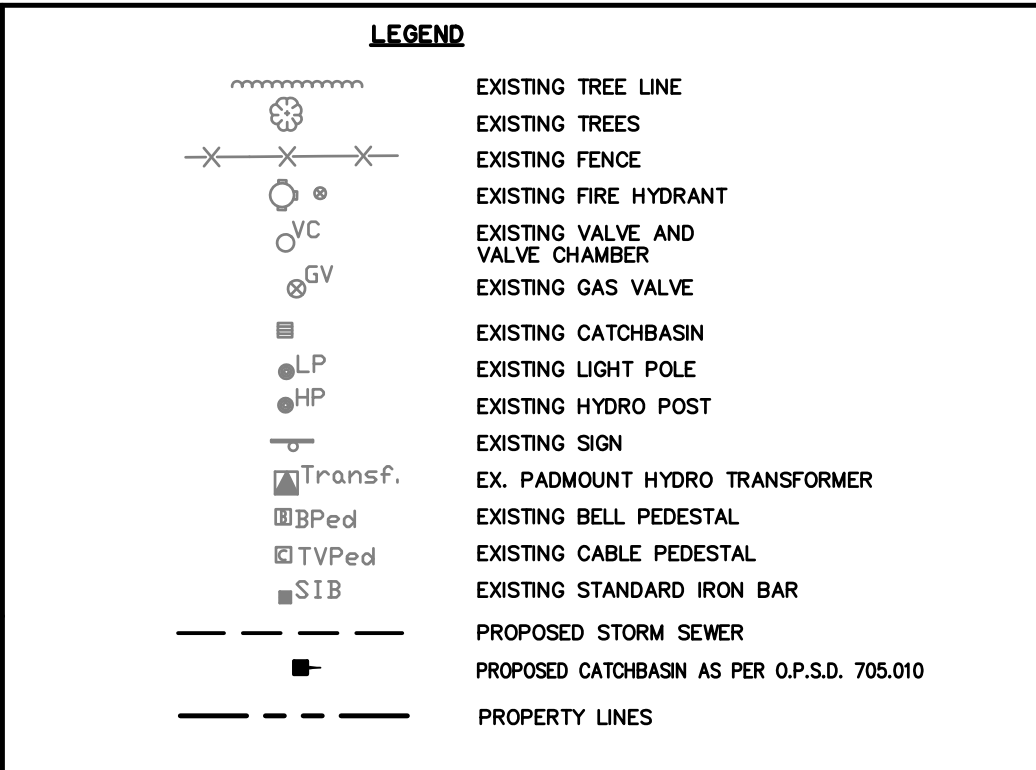


SECTION A-A
SECTION B-B
SECTION C-C

NOTES:
 1 Number of bales varies and shall suit ditch.
 2 Straw bales shall be balled tightly against adjoining bales and shaped to conform to the sides of the ditch to prevent water flow through barrier.

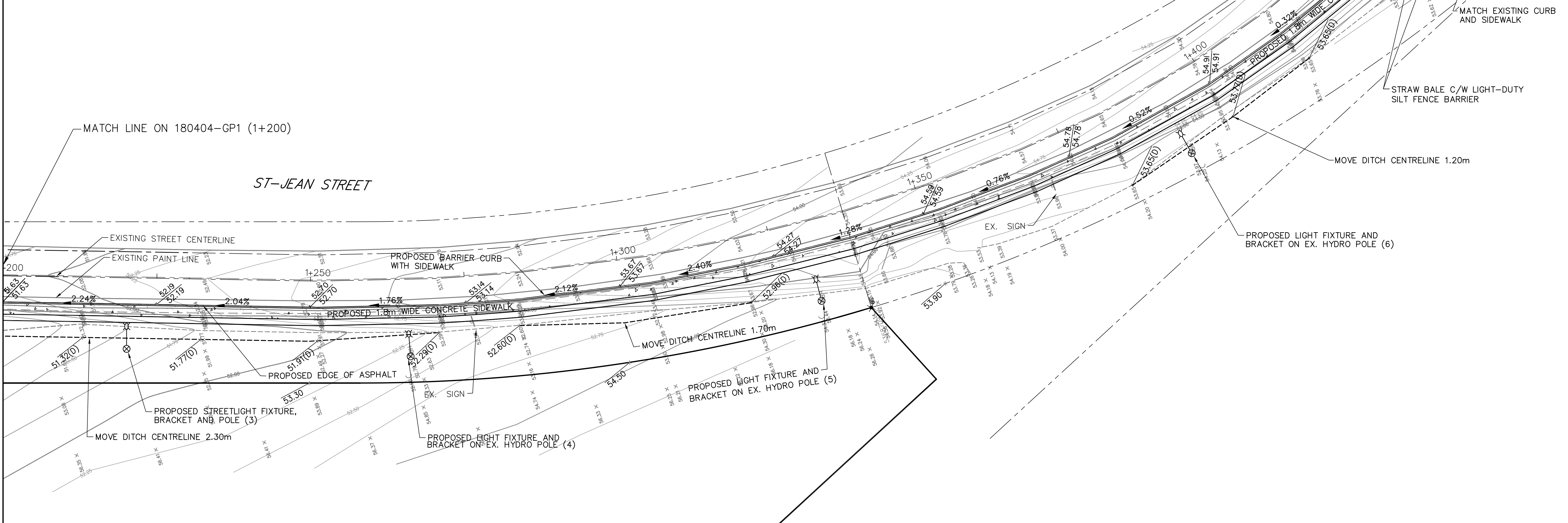
ONTARIO PROVINCIAL STANDARD DRAWING Nov 2015 Rev 2
STRAW BALE FLOW CHECK DAM
 OPSD 219.180

- NOTES:**
1. PROVIDE INSULATION AT CATCHBASINS IN ACCORDANCE WITH OPSS
 2. INSTALL ALL SERVICES IN ACCORDANCE WITH OPSS
 3. ALL SIDEWALKS SHALL BE HANDICAP ACCESSIBLE
 4. ROAD G'S TO BE EQUIPPED WITH 200mm# LEAD TO DITCH
 5. CONTRACTOR SHALL ENSURE THAT ALL SERVICE TRENCHES ARE RESTORED TO EXISTING CONDITIONS BY CONTRACTOR. (I.E. CULVERT CROSSINGS, DITCHES, LANDSCAPING, DRIVEWAYS, FENCES ETC.)
 6. THE EXACT LOCATION OF UTILITIES SHALL BE DETERMINED BY THE CONTRACTOR AND UTILITY COMPANIES CONCERNED.
 7. THE CONTRACTOR SHALL BE RESPONSIBLE FOR LOCATING, SUPPORTING AND PROTECTING ALL UTILITIES AND STRUCTURES EXISTING AT THE TIME OF CONSTRUCTION IN THE WORK AREA.
 8. DEPTH AND EXACT LOCATION OF EXISTING WATERMAIN TO BE CONFIRMED BY THE CONTRACTOR.

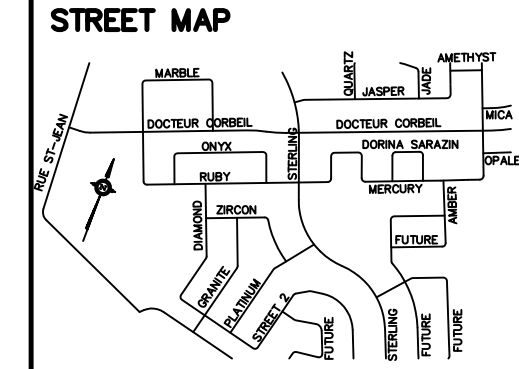


TACTILE WALKING SURFACE INDICATORS (TWSI)
 C/W 1.5m TAPERS AND CONCRETE RAMPS

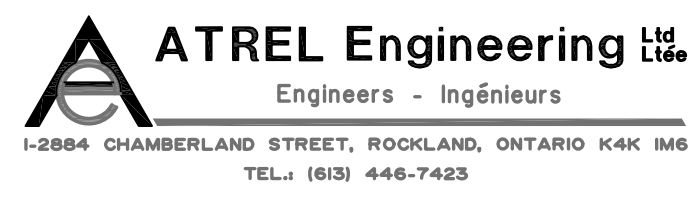
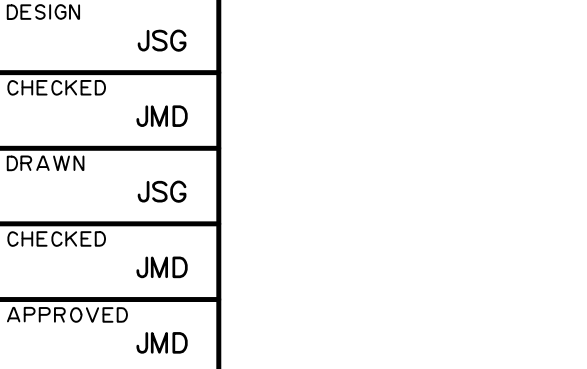
- REFER TO LATEST OPSS, OPSD**
- EROSION AND SEDIMENT CONTROL PLAN**
- O.P.S.D 219.100 - O.P.S.S 805
 - O.P.S.D 219.110
 - O.P.S.D 219.120
 - O.P.S.D 219.180
- ROADWORK**
- O.P.S.D 310.010 - O.P.S.S 407
 - O.P.S.D 310.033 - O.P.S.S 510
 - O.P.S.D 310.039 - O.P.S.S 351
 - O.P.S.D 600.110 - O.P.S.S 353
 - O.P.S.D 605.020 - O.P.S.S 310
 - O.P.S.D 605.040 - O.P.S.S 1150



THE POSITION OF ALL POLE LINES, CONDUITS, WATERMANS, SEWERS AND OTHER UNDERGROUND AND OVERGROUND UTILITIES AND STRUCTURES IS NOT NECESSARILY SHOWN ON THE CONTRACT DRAWINGS, AND WHERE SHOWN, THE ACCURACY OF THE POSITION OF SUCH UTILITIES AND STRUCTURES IS NOT GUARANTEED. BEFORE STARTING WORK, DETERMINE THE EXACT LOCATION OF ALL SUCH UTILITIES AND STRUCTURES AND ASSUME ALL LIABILITY FOR DAMAGE TO THEM.



No.	REVISION	APPLIES WHEN DRAWING MODIFIED	DATE	BY



CITY OF CLARENCE-ROCKLAND ST-JEAN SIDEWALK PLAN GENERAL PLAN (2)	PROJECT No. 180404
	DATE MAY 2018
	DRAWING No. 180404-GP2