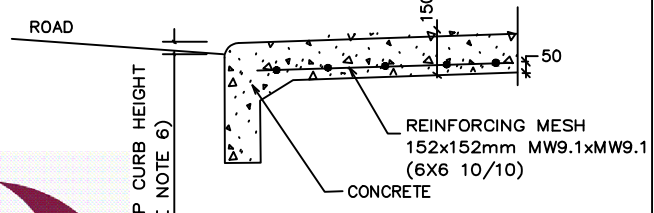


SECTION THROUGH RAMP TOTAL (SEE NOTE 7)
 SLOPE FOR 1.80m WALKS: 2-4% (36mm-72mm)
 SLOPE FOR 3.00m WALKS: 2-4% (60mm-120mm)



SECTION A - A

- NOTES:**
1. RAMP WIDTH SHOULD MATCH SIDEWALK WIDTH, BE A MINIMUM OF 1.8m WIDE AND PERMIT WHEELCHAIRS TO ENTER CROSSING AT RIGHT ANGLES.
 2. SIDEWALK TEXTURING GROOVES SHALL BE 12mm IN WIDTH, 12mm IN DEPTH AND 150mm APART.
 3. TEXTURING GROOVES ARE TO BE ALIGNED TO THE CROSSING.
 4. ALL DIMENSIONS ARE IN MILLIMETRES UNLESS SHOWN OTHERWISE.
 5. INCREASE CURB RAMP WIDTH AS REQUIRED TO ALLOW TRANSITIONS TO START AT THE EDGE OF THE CROSS WALK.
 6. DROP CURB HEIGHT MINIMUM 0mm, DESIRED 15mm, MAXIMUM 25mm.
 7. THE MAXIMUM SLOPE IS NOT TO EXCEED 4% FOR PEDESTRIAN RAMPS.



PEDESTRIAN CURB RAMP
 WITHOUT BOULEVARD

DATE:	OCT. 2008
REV.	-
DATE:	-
DWG. No.:	SC-6