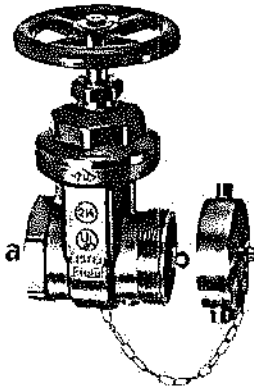




A53

GATE VALVE
300 lb. RATED

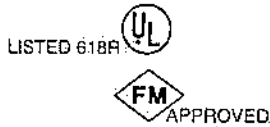


Straightway pattern, non-rising stem, 300 lb. hose gate valves are intended for use on standpipes, fire pumps and hydrants.

FEMALE x MALE

Standard equipment:
Female NPT inlet x male hose thread outlet, forged brass with red hand wheel, solid wedge disc with tapered seats.

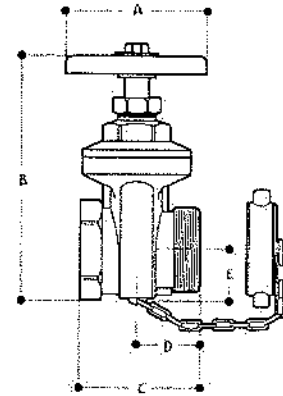
Available without cap and chain.



| a | b |
|--------|--------|
| 2 1/2" | 2 1/2" |
| 3" | 2 1/2" |

Optional Finishes:

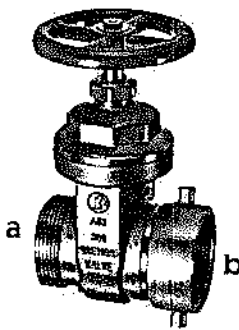
- PB
- RC
- PC



| | 2 1/2" x 2 1/2" | 3" x 2 1/2" |
|---|-----------------|-------------|
| A | 5 5/32" | 5 5/32" |
| B | 9 19/64" | 9 19/64" |
| C | 4 11/32" | 4 17/32" |
| D | 2 17/64" | 2 17/64" |
| E | 1 57/64" | 1 57/64" |

A53G

SINGLE HYDRANT
GATE VALVE

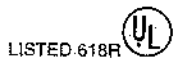


Straightway pattern, non-rising stem, 300 lb. hose gate valves are intended for use on standpipes, fire pumps and hydrants.

Standard equipment:
Brass body with brass trim, pin lug, female hose thread swivel inlet x male hose thread outlet.
Red hand wheel.

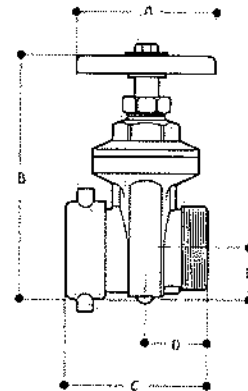
Note:

Particularly used when space limitation or appearance preclude a permanent type installation.



| a | b |
|--------|--------|
| 2 1/2" | 2 1/2" |

Optional Trim:
Swivel inlet with rocker lugs.



| | 2 1/2" x 2 1/2" |
|---|-----------------|
| A | 5 5/32" |
| B | 9 19/64" |
| C | 5 13/64" |
| D | 2 17/64" |
| E | 1 57/64" |

National Fire Equipment Ltd.

40 Audia Court
 Concord, Ontario
 L4K 3N4
 Tel: (905) 761-6355
 Fax: (905) 761-6458

SIDEWALK SIAMESE CONNECTION

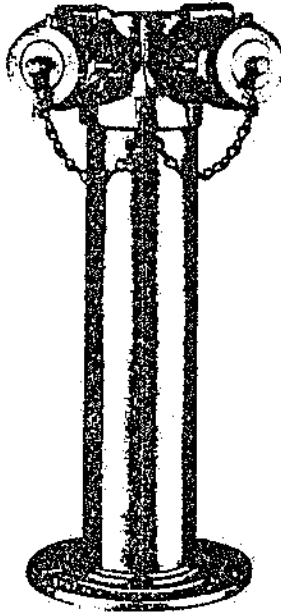


PLATE 207

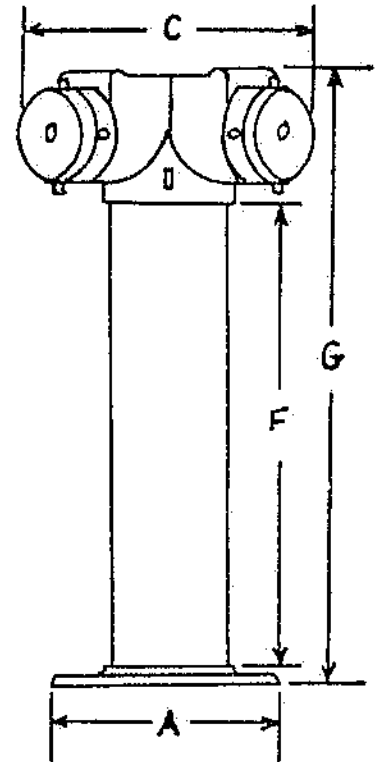
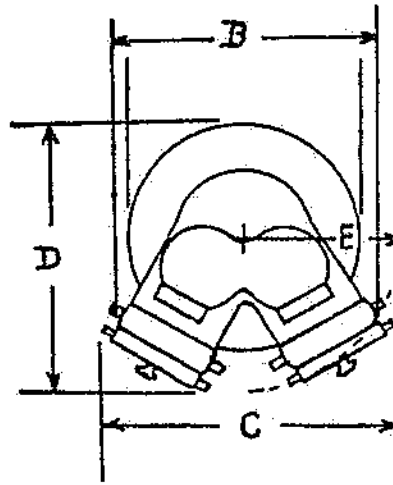


PLATE 207. Consists of brass escutcheon plate, polished brass sleeve to cover pipe, brass siamese, plugs and chains.

Branding on escutcheon plate: "Standpipe" or "Auto-Spkr", or special lettering.

STANDARD FINISH: polished sleeve, red enamel body and plate with polished brass swivels and plugs.

SPECIAL FINISH: Polished all over or polished all over and chromium plated.

| Centimetres | A | B | C | D | E | F | G |
|---------------------|------|------|------|-------|------|------|------|
| 7.6 x 6.35 x 6.35 | 25.4 | 23.5 | 29.2 | 21.92 | 15.2 | 45.1 | 59.7 |
| 10.16 x 6.35 x 6.35 | 25.4 | 23.5 | 29.2 | 21.92 | 15.2 | 45.1 | 59.7 |
| 15.24 x 6.35 x 6.35 | 31.3 | 23.5 | 29.2 | 25.1 | 15.2 | 45.1 | 60.3 |

| Size, Inches | A | B | C | D | E | F | G |
|----------------------|---------|-------|--------|-------|---|--------|--------|
| 3" x 2 1/2" x 2 1/2" | 10 | 9 1/4 | 11 1/2 | 8 5/8 | 6 | 17 3/4 | 23 1/2 |
| 4" x 2 1/2" x 2 1/2" | 10 | 9 1/4 | 11 1/2 | 8 5/8 | 6 | 17 3/4 | 23 1/2 |
| 6" x 2 1/2" x 2 1/2" | 12 5/16 | 9 1/4 | 11 1/2 | 9 7/8 | 6 | 17 3/4 | 23 3/4 |